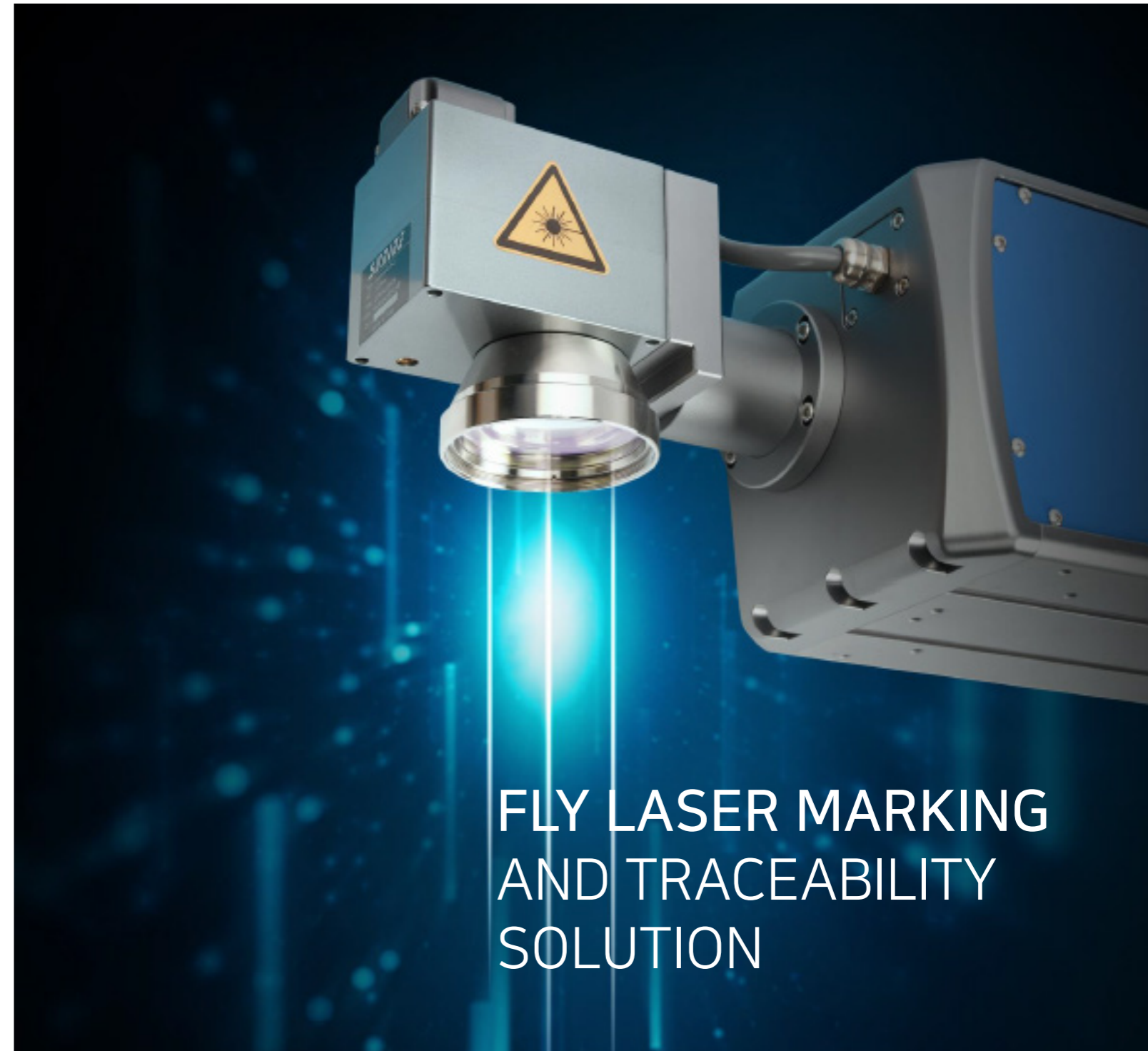




Delivering the best solutions and working with customers' successes
Yoosungeng Co., Ltd

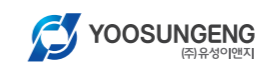


FLY LASER MARKING AND TRACEABILITY SOLUTION



Head Office : 65, Jungnigongdan-ro, Naeseo-eup, Masanhoewon-gu,
Changwon-si, Gyeongsangnam-do, Korea (jiwondong 106 Ho)
Tel +82-70-7302-0024 Fax +82-303-3440-0022
Branch Office : 136, Jiksan-ro, Jiksan-eup, Seobuk-gu, Cheonan-si,
Chungcheongnam-do, Republic of Korea (SMART ICT - 317 Ho)
Tel +82-70-7519-0024
www.yoosungeng.co.kr

- YV Series** YV110i/YV310i/YV320i/YV330i/YV610i
- YD Series** YD2000i/YD3000i/YD5000i
- YUV Series** YUV300Fi/YUV500Fi/YUV1010i
- YK Series** YK360/YK632/YK633/YK660/YK720/YK730/YK750/YK903F



Co2 laser marking machine YV110i, YV310i, YV320i, YV330i, YV610i



YV Series

Long-Term Operation Stability

- Sophisticated parts for machine say no to substandard products
- Power-on and ready-to-use, zero maintenance cost
- Self-developed software ensures stable performance without any faults

Born For Efficiency

- Draw line speed up to 12000mm/s
- Standard and customized communication protocols
- High performance self-developed smart chip set can quickly process huge data and complex graphics.

Easy-To-Operate

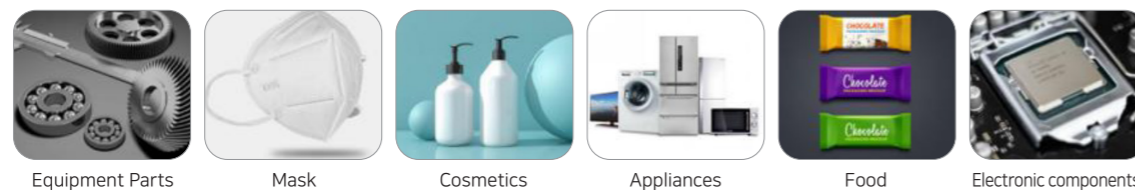
- Smart touch screen panel
- System operation is easy to use
- Support various languages, one-button marking

Capability of Integration

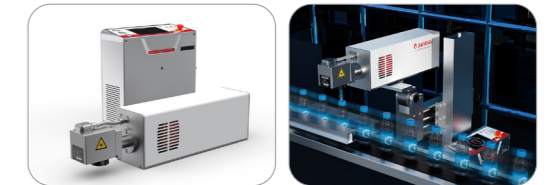
- Light-weighted body made of high-density materials
- High-transmitted fused silica field lens ensures high stability
- Various working distances are available to adapt to all kinds of production environments, making production line integration more flexible

version	YV110i	YV310i	YV320i	YV330i	YV610i
Laser type	Sealed-Off CO2 Laser, approx. 45,000 hours MTBF				
Output power	≥10w		≥30w		≥60w
Laser wavelength	10.6μm	10.6μm	10.2μm	9.3μm	10.6μm
Marking method	High-precision 2-dimensional scanning				
Line speed	≤12000mm/s				
Control system/OS	7 inch touch screen (built-in) & 10 inch hand held terminal / WIN CE				
Cooling system	Air cooling system				
Reflector size	Standard: 8.5mm			10mm	
Marking range	Standard: 90mmx90mm, max to 450mm x450mm			110x110mm 450x450mm	
Positioning method	Red light positioning, auto focus				
Marking speed	0-189m/min (it depends on material and marking content)				
Fonts/File format	Korean, English, Chinese, Russian, Korean, Arabian etc. BMP/DXF/HPGL/JPEG/PLT				
Bar code / QR code	CODE39/CODE 128/code 126/QR code/Z-code/DM code/Visual code, etc				
Interfaces	RS-232C/USB2.0/Ethernet I/O				

APPLICATION



Co2 laser marking machine YK630, YK632, YK633, YK660



YK6 Series

Long-Term Operation Stability

- Sophisticated parts for machine say no to substandard products
- Power-on and ready-to-use, zero maintenance cost
- Self-developed software ensures stable performance without any faults

Born For Efficiency

- Draw line speed up to 12000mm/s
- Standard and customized communication protocols
- High performance self-developed smart chip set can quickly process huge data and complex graphics.

Easy-To-Operate

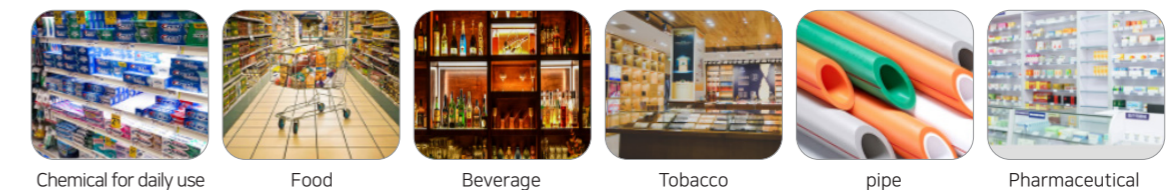
- Smart touch screen panel
- System operation is easy to use
- Support various languages, one-button marking

Capability of Integration

- Light-weighted body made of high-density materials
- High-transmitted fused silica field lens ensures high stability
- Various working distances are available to adapt to all kinds of production environments, making production line integration more flexible

version	YK630	YK632	YK633	YK660
Laser type	Sealed-Off CO2 Laser			
Output power		≥30w		≥60w
Laser wavelength	10.6μm	10.2μm	9.3μm	10.6μm
Marking method	High-precision 2-dimensional scanning			
Line speed	≤7000mm/s			
Control system/OS	7 inch touch screen (built-in) & 10 inch hand held terminal / WIN CE			
Cooling system	Air cooling system			
Reflector size	Standard 10mm			
Marking range	Standard 90x90mm / max to 450x450mm			
Positioning method	Red light positioning, auto focus			
Marking speed	0-189m/min (it depends on material and marking content)			
Fonts/File format	Korean, English, Chinese, Russian, Korean, Arabian etc. BMP/DXF/HPGL/JPEG/PLT			
Bar code / QR code	CODE39/CODE 128/code 126/QR code/Z-code/DM code/Visual code, etc			
Interfaces	RS-232C/USB2.0/Ethernet I/O			

APPLICATION



Fiber Laser Marking Machine YD2000i, YD300i, YD5000i



YD Series

Long-Term Operation Stability

- Sophisticated parts for machine say no to substandard products
- Power-on and ready-to-use, zero maintenance cost
- Self-developed software ensures stable performance without any faults

Born For Efficiency

- Draw line speed up to 12000mm/s
- Standard and customized communication protocols
- High performance self-developed smart chip set can quickly process huge data and complex graphics.

Easy-To-Operate

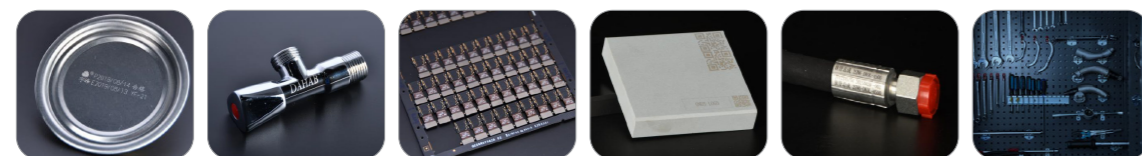
- Smart touch screen panel
- System operation is easy to use
- Support various languages, one-button marking

Capability of Integration

- Light-weighted body made of high-density materials
- High-transmitted fused silica field lens ensures high stability
- Various working distances are available to adapt to all kinds of production environments, making production line integration more flexible

version	D2000i	D3000i	D5000i
Laser type	Fiber Laser Source		
Output power	≥20w	≥30w	≥50w
Laser wavelength	1064nm		
Marking method	High-precision 2-dimensional scanning		
Line speed	≤12000mm/s		
Control system/OS	7 inch touch screen (built-in) & 10 inch hand held terminal / WIN CE		
Cooling system	Air cooling system		
Reflector size	Standard: 8.5mm		
Marking range	Standard 110x110mm		
Positioning method	Red light positioning, auto focus		
Marking speed	0-189m/min (it depends on material and marking content)		
Fonts/File format	Korean, English, Chinese, Russian, Korean, Arabian etc. BMP/DXF/HPGL/JPEG/PLT		
Bar code / QR code	CODE39/CODE 128/code 126/QR code/Z-code/DM code/Visual code, etc		
Interfaces	RS-232C/USB2.0/Ethernet I/O		

APPLICATION



Fiber Laser Marking Machine YK720, YK730, YK750



YK7 Series

Long-Term Operation Stability

- Sophisticated parts for machine say no to substandard products
- Power-on and ready-to-use, zero maintenance cost
- Self-developed software ensures stable performance without any faults

Born For Efficiency

- Draw line speed up to 12000mm/s
- Standard and customized communication protocols
- High performance self-developed smart chip set can quickly process huge data and complex graphics.

Easy-To-Operate

- Smart touch screen panel
- System operation is easy to use
- Support various languages, one-button marking

Capability of Integration

- Light-weighted body made of high-density materials
- High-transmitted fused silica field lens ensures high stability
- Various working distances are available to adapt to all kinds of production environments, making production line integration more flexible

version	YK720	YK730	YK750
Laser type	Fiber Laser Source		
Output power	≥20w	≥30w	≥50w
Laser wavelength	1064nm		
Marking method	High-precision 2-dimensional scanning		
Line speed	≤7000mm/s		
Control system/OS	h screen (built-in) & 10 inch hand held terminal / WIN CE		
Cooling system	Air cooling system		
Reflector size	Standard: 8.5mm		
Marking range	Standard 110x110mm		
Positioning method	Red light positioning, auto focus		
Marking speed	0-189m/min (it depends on material and marking content)		
Fonts/File format	Korean, English, Chinese, Russian, Korean, Arabian etc. BMP/DXF/HPGL/JPEG/PLT		
Bar code / QR code	CODE39/CODE 128/code 126/QR code/Z-code/DM code/Visual code, etc		
Interfaces	RS-232C/USB2.0/Ethernet I/O		

APPLICATION



UV Laser Marking Machine *YUV300Fi, YUV500Fi, YUV1010i*



YUV Series

Long-Term Operation Stability

- Sophisticated parts for machine say no to substandard products
- Power-on and ready-to-use, zero maintenance cost
- Self-developed software ensures stable performance without any faults

Born For Efficiency

- Draw line speed up to 12000mm/s
- Standard and customized communication protocols
- High performance self-developed smart chip set can quickly process huge data and complex graphics.

Easy-To-Operate

- Smart touch screen panel
- System operation is easy to use
- Support various languages, one-button marking

Capability of Integration

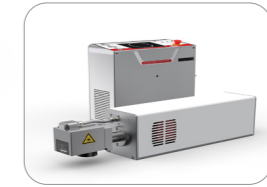
- Light-weighted body made of high-density materials
- High-transmitted fused silica field lens ensures high stability
- Various working distances are available to adapt to all kinds of production environments, making production line integration more flexible

version	YUV300Fi	YUV500Fi	YUV1010i
Laser type	uv Lase Source		
Output power	≥3w	≥5w	≥10w
Laser wavelength	355nm		
Marking method	High-precision 2-dimensional scanning		
Line speed	≤12000mm/s		
Control system/OS	7 inch touch screen (built-in) & 10 inch hand held terminal / WIN CE		
Cooling system	Air cooling system		
Reflector size	Standard: 8.5mm		
Marking range	Standard 110x110mm		
Positioning method	Red light positioning, auto focus		
Marking speed	0~300m/min(it depends on material and marking content)		
Fonts/File format	Korean,English, Chinese,Russian, Korean, Arabian etc. BMP/DXF/HPGL/JPEG/PLT		
Bar code / QR code	CODE39/CODE 128/code 126/QR code/Z-code/DM code/Visual code, etc		
Interfaces	RS-232C/USB2.0/Ethernet I/O		

APPLICATION



UV Laser Marking Machine *YK903F, YK905F*



YK9 Series

Long-Term Operation Stability

- Sophisticated parts for machine say no to substandard products
- Power-on and ready-to-use, zero maintenance cost
- Self-developed software ensures stable performance without any faults

Born For Efficiency

- Draw line speed up to 12000mm/s
- Standard and customized communication protocols
- High performance self-developed smart chip set can quickly process huge data and complex graphics.

Easy-To-Operate

- Smart touch screen panel
- System operation is easy to use
- Support various languages, one-button marking

Capability of Integration

- Light-weighted body made of high-density materials
- High-transmitted fused silica field lens ensures high stability
- Various working distances are available to adapt to all kinds of production environments, making production line integration more flexible

version	YK903F	YK905F
Laser type	uv Lase Source	
Output power	≥3w	≥5w
Laser wavelength	355nm	
Marking method	High-precision 2-dimensional scanning	
Line speed	≤7000mm/s	
Control system/OS	7 inch touch screen (built-in) & 10 inch hand held terminal / WIN CE	
Cooling system	Air cooling system	
Reflector size	Air cooling system	
Marking range	Standard 110x110mm	
Positioning method	Red light positioning, auto focus	
Marking speed	0~300m/min(it depends on material and marking content)	
Fonts/File format	Korean,English, Chinese,Russian, Korean, Arabian etc. BMP/DXF/HPGL/JPEG/PLT	
Bar code / QR code	CODE39/CODE 128/code 126/QR code/Z-code/DM code/Visual code, etc	
Interfaces	RS-232C/USB2.0/Ethernet, I/O	

APPLICATION

